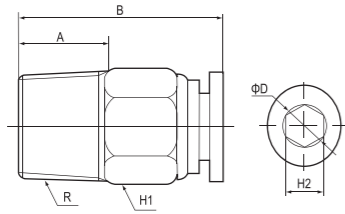


One Touch Fittings

PC Straight Male Thread

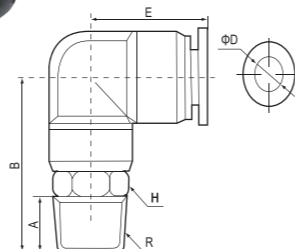


Model

- PC4-M5 PC8-04
- PC4-01 PC10-01
- PC4-02 PC10-02
- PC6-M5 PC10-03
- PC6-01 PC10-04
- PC6-02 PC12-01
- PC6-03 PC12-02
- PC6-04 PC12-03
- PC8-01 PC12-04
- PC8-02 PC16-03
- PC8-03 PC16-04

Pipe Diameter	
Metric	Inch
M5	5/32
1/8	1/4
1/4	3/8
3/8	1/2
1/2	3/4
3/4	

PL Elbow Male Thread

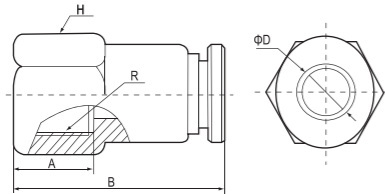


Model

- PL4-M5 PL8-03
- PL4-01 PL8-04
- PL4-02 PL10-01
- PL6-M5 PL10-02
- PL6-01 PL10-03
- PL6-02 PL10-04
- PL6-03 PL12-01
- PL6-04 PL12-02
- PL8-01 PL12-03
- PL8-02 PL12-04

Pipe Diameter	
Metric	Inch
M5	5/32
1/8	1/4
1/4	3/8
3/8	1/2
1/2	3/4
3/4	

PCF Straight Female Thread

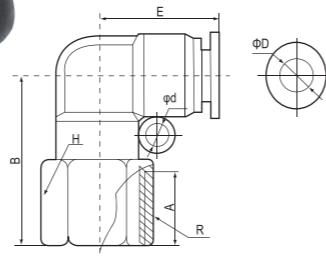


Model

- PCF4-M5 PCF8-03
- PCF4-01 PCF8-04
- PCF4-02 PCF10-01
- PCF6-M5 PCF10-02
- PCF6-01 PCF10-03
- PCF6-02 PCF10-04
- PCF6-03 PCF12-02
- PCF6-04 PCF12-03
- PCF8-01 PCF12-04
- PCF8-02

Pipe Diameter	
Metric	Inch
M5	5/32
1/8	1/4
1/4	3/8
3/8	1/2
1/2	

PLF Elbow Female Thread



Model

- PLF4-M5 PLF8-03
- PLF4-01 PLF8-04
- PLF4-02 PLF10-01
- PLF6-M5 PLF10-02
- PLF6-01 PLF10-03
- PLF6-02 PLF10-04
- PLF6-03 PLF12-02
- PLF6-04 PLF12-03
- PLF8-01 PLF12-04
- PLF8-02

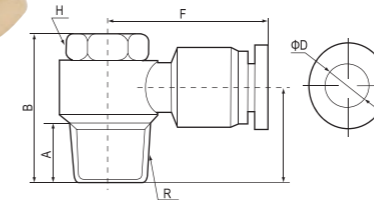
Pipe Diameter	
Metric	Inch
M5	5/32
1/8	1/4
1/4	3/8
3/8	1/2
1/2	

One Touch Fittings

PLL Elbow Longer Male Thread



PH External Hex Joint

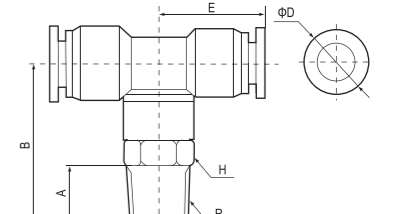


Model

- PH4-M5 PH8-03
- PH4-01 PH8-04
- PH4-02 PH10-01
- PH6-M5 PH10-02
- PH6-01 PH10-03
- PH6-02 PH10-04
- PH6-03 PH12-01
- PH6-04 PH12-02
- PH8-01 PH12-03
- PH8-02 PH12-04

Pipe Diameter	
Metric	Inch
M5	5/32
1/8	1/4
1/4	3/8
3/8	1/2
1/2	

PB T-Shape Vertical Male Thread

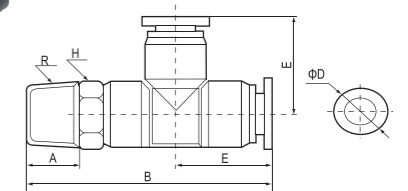


Model

- PB4-M5 PB8-03
- PB4-01 PB8-04
- PB4-02 PB10-01
- PB6-M5 PB10-02
- PB6-01 PB10-03
- PB6-02 PB10-04
- PB6-03 PB12-02
- PB6-04 PB12-03
- PB8-01 PB12-04
- PB8-02

Pipe Diameter	
Metric	Inch
M5	5/32
1/8	1/4
1/4	3/8
3/8	1/2
1/2	3/4
3/4	

PD T-Shape side Male Thread

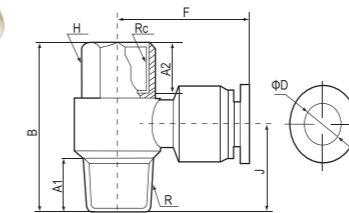


Model

- PD4-M5 PD8-03
- PD4-01 PD8-04
- PD4-02 PD10-01
- PD6-M5 PD10-02
- PD6-01 PD10-03
- PD6-02 PD10-04
- PD6-03 PD12-02
- PD6-04 PD12-03
- PD8-01 PD12-04
- PD8-02

Pipe Diameter	
Metric	Inch
M5	5/32
1/8	1/4
1/4	3/8
3/8	1/2
1/2	3/4
3/4	

PHF Joints in Series



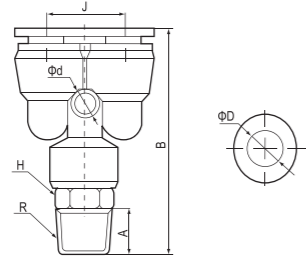
Model

- PHF4-01 PHF8-04
- PHF4-02 PHF10-01
- PHF6-01 PHF10-02
- PHF6-02 PHF10-03
- PHF6-03 PHF10-04
- PHF6-04 PHF12-02
- PHF8-01 PHF12-03
- PHF8-02 PHF12-04
- PHF8-03

Pipe Diameter	
Metric	Inch
M5	5/32
1/8	1/4
1/4	3/8
3/8	1/2
1/2	

One Touch Fittings

PX Y-Shape Three-Way Thread

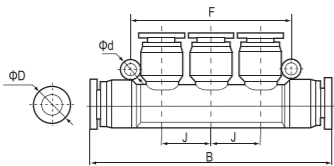


Model

- PX4-M5 PX8-03
- PX4-01 PX8-04
- PX4-02 PX10-01
- PX6-M5 PX10-02
- PX6-01 PX10-03
- PX6-02 PX10-04
- PX6-03 PX12-02
- PX6-04 PX12-03
- PX8-01 PX12-04
- PX8-02

Pipe Diameter	
Metric	Inch
Φ4	5/32
Φ6	1/4
Φ8	5/16
Φ10	3/8
Φ12	1/2
M5	
1/8	
1/4	
3/8	
1/2	

PK Five-way

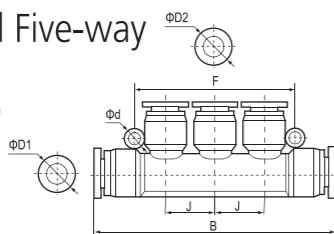


Model

- PK4
- PK6
- PK8
- PK10
- PK12

Pipe Diameter	
Metric	Inch
Φ4	5/32
Φ6	1/4
Φ8	5/16
Φ10	3/8
Φ12	1/2

PKG Reduced Five-way

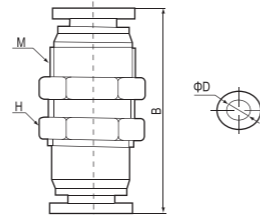


Model

- PKG6-4
- PKG8-4
- PKG8-6
- PKG10-6
- PKG10-8
- PKG12-8
- PKG12-10

Pipe Diameter	
Metric	Inch
Φ4	5/32
Φ6	1/4
Φ8	5/16
Φ10	3/8
Φ12	1/2

PM Straight With Partition

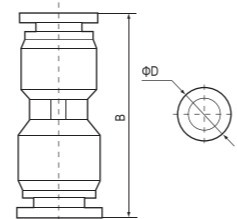


Model

- PM4
- PM6
- PM8
- PM10
- PM12

Pipe Diameter	
Metric	Inch
Φ4	5/32
Φ6	1/4
Φ8	5/16
Φ10	3/8
Φ12	1/2

PU Straight Union

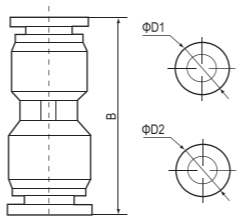


Model

- PU4
- PU6
- PU8
- PU10
- PU12
- PU14
- PU16

Pipe Diameter	
Metric	Inch
Φ4	5/32
Φ6	1/4
Φ8	5/16
Φ10	3/8
Φ12	1/2

PUG Reduced Straight Union



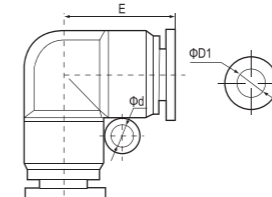
Model

- PUG6-4
- PUG8-4
- PUG8-6
- PUG10-6
- PUG10-8
- PUG12-8
- PUG12-10
- PUG16-12

Pipe Diameter	
Metric	Inch
Φ4	5/32
Φ6	1/4
Φ8	5/16
Φ10	3/8
Φ12	1/2

One Touch Fittings

PV Elbow Two-Way

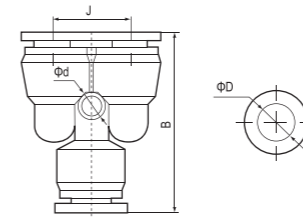


Model

- PV4
- PV6
- PV8
- PV10
- PV12
- PV14
- PV16

Pipe Diameter	
Metric	Inch
Φ4	5/32
Φ6	1/4
Φ8	5/16
Φ10	3/8
Φ12	1/2

PY Y-Shape Three-Way

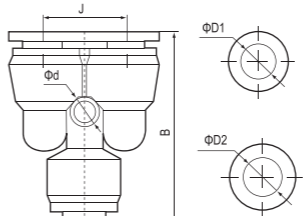


Model

- PY4
- PY6
- PY8
- PY10
- PY12

Pipe Diameter	
Metric	Inch
Φ4	5/32
Φ6	1/4
Φ8	5/16
Φ10	3/8
Φ12	1/2

PYG Y-Shape Reduced Three-way

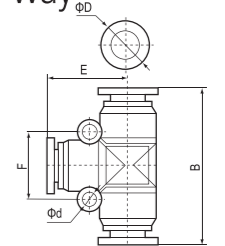


Model

- PYG6-4
- PYG8-4
- PYG8-6
- PYG10-6
- PYG10-8
- PYG12-8
- PYG12-10

Pipe Diameter	
Metric	Inch
Φ4	5/32
Φ6	1/4
Φ8	5/16
Φ10	3/8
Φ12	1/2

PE T-Shape Three-way

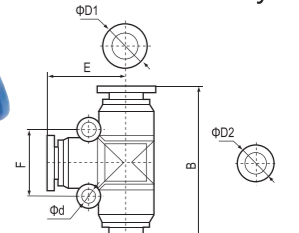


Model

- PE4
- PE6
- PE8
- PE10
- PE12
- PE14
- PE16

Pipe Diameter	
Metric	Inch
Φ4	5/32
Φ6	1/4
Φ8	5/16
Φ10	3/8
Φ12	1/2

PEG T-Shape Reduced Three-way



Model

- PEG6-4
- PEG8-4
- PEG8-6
- PEG10-6
- PEG10-8
- PEG12-8
- PEG12-10
- PEG16-12

Pipe Diameter	
Metric	Inch
Φ4	5/32
Φ6	1/4
Φ8	5/16
Φ10	3/8
Φ12	1/2

PZA Cross Four-way



Model

- PZA4
- PZA6
- PZA8
- PZA10
- PZA12

Pipe Diameter	
Metric	Inch
Φ4	5/32
Φ6	1/4
Φ8	5/16
Φ10	3/8
Φ12	1/2

One Touch Fittings

LSA Pipe Speed Controller



Model

- LSA-4
- LSA-6
- LSA-8
- LSA-10
- LSA-12

Thread Pitch	Pipe Diameter					
	Metric			Inch		
φ4	φ6	φ8	φ10	φ12	5/32	1/4
φ6					1/4	
φ8					5/16	
φ10					3/8	
φ12					1/2	

PKB Side Male Thread Five-way



Model

- PKB4-01 PKB8-04
- PKB4-02 PKB10-01
- PKB6-01 PKB10-02
- PKB6-02 PKB10-03
- PKB6-03 PKB10-04
- PKB8-01 PKB12-02
- PKB8-02 PKB12-03
- PKB8-03 PKB12-04

Thread Pitch	Pipe Diameter					
	Metric			Inch		
M5	φ4	φ6	φ8	φ10	φ12	5/32
1/8						1/4
1/4						5/16
3/8						3/8
1/2						1/2

PKD Side Female Thread



Model

- PKD4-01 PKD8-04
- PKD4-02 PKD10-01
- PKD6-01 PKD10-02
- PKD6-02 PKD10-03
- PKD6-03 PKD10-04
- PKD8-01 PKD12-02
- PKD8-02 PKD12-03
- PKD8-03 PKD12-04

Thread Pitch	Pipe Diameter					
	Metric			Inch		
M5	φ4	φ6	φ8	φ10	φ12	5/32
1/8						1/4
1/4						5/16
3/8						3/8
1/2						1/2

HVFF Series Hand Switch



Model

- HVFF-4
- HVFF-6
- HVFF-8
- HVFF-10
- HVFF-12

Thread Pitch	Pipe Diameter					
	Metric			Inch		
φ4	φ6	φ8	φ10	φ12	5/32	1/4
φ6					1/4	
φ8					5/16	
φ10					3/8	
φ12					1/2	

BUC Series Hand Valves



Model

- BUC-6
- BUC-8

BUL Series Hand Valves



Model [ φ D1- φ D2]

- BUL-06
- BUL-08

One Touch Fittings

BC Series Hand Valves



Model

- BC6-M5 BC8-01
- BC6-01 BC8-02
- BC6-02 BC8-03
- BC6-03 BC8-04
- BC6-04

BC-G Series Hand Valves



Model [ φ D-T]

- BC6-01G BC8-02G
- BC6-02G BC8-03G
- BC6-03G BC8-04G
- BC6-04G
- BC8-01G

BL-G Series Hand Valves



Model [ φ D-T]

- BL6-01G BL8-01G
- BL6-02G BL8-02G
- BL6-03G BL8-03G
- BL6-04G BL8-04G

Micro Quick Fittings



SPL-C

- external diameter of pipe \* thread
- 3-M3 4-M5 5-M5 6-M5
  - 3-M5 4-01 5-01 6-01
  - 3-01 4-02 5-02 6-02

SPC-C

- external diameter of pipe \* thread
- 3-M3 4-M5 5-M5 6-M5
  - 3-M5 4-01 5-01 6-01
  - 3-01 4-02 5-02 6-02

PC-G Straight Male Thread



Model

- PC4-01G PC10-01G
- PC4-02G PC10-02G
- PC6-01G PC10-03G
- PC6-02G PC10-04G
- PC6-03G PC12-02G
- PC6-04G PC12-03G
- PC8-01G PC12-04G
- PC8-02G
- PC8-03G
- PC8-04G

PB-G T-Shape Vertical Male Thread



Model

- PB4-01G PB10-01G
- PB4-02G PB10-02G
- PB6-01G PB10-03G
- PB6-02G PB10-04G
- PB6-03G PB12-02G
- PB6-04G PB12-03G
- PB8-01G PB12-04G
- PB8-02G
- PB8-03G
- PB8-04G

PL-G Elbow Male Thread



Model

- PL4-01G PL10-01G
- PL4-02G PL10-02G
- PL6-01G PL10-03G
- PL6-02G PL10-04G
- PL6-03G PL12-02G
- PL6-04G PL12-03G
- PL8-01G PL12-04G
- PL8-02G
- PL8-03G
- PL8-04G

PX-G Y-Shape Three-way Thread



Model

- PX4-01G PX10-01G
- PX4-02G PX10-02G
- PX6-01G PX10-03G
- PX6-02G PX10-04G
- PX6-03G PX12-02G
- PX6-04G PX12-03G
- PX8-01G PX12-04G
- PX8-02G
- PX8-03G
- PX8-04G